

Chevrolet Silverado 2011 installation instructions

drawing number:

CHW21.000.000A

1. Remove the original plastic from the vehicle the engine compartment by removing the clips in order to reach the grill.



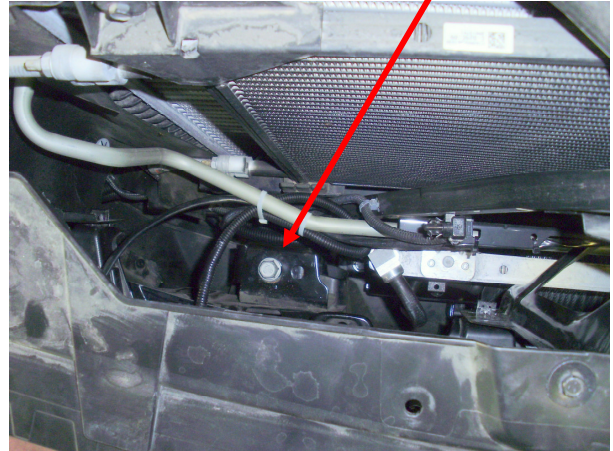
2. This is how the engine compartment should look after removing the original plastic.



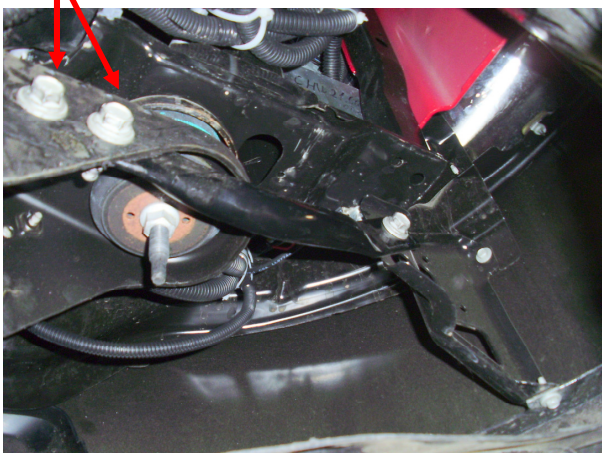
3. Remove the two screws (right side + left side) under the original bumper.



4. Remove the two screws located between the radiator and the grill as shown in the picture (on the left + right side).



5. Open the two screws on both sides of the vehicle, located under the bumper.



6. Before placing the control box, remove the original bumper. The location of the control box is on the right side of the vehicle under the right headlight.



7. Please move the "+" cable that comes out of the control box and goes under the right headlight, goes towards the battery on the right side and connects to the "+" of the circuit breaker.

8. Remove the two parts from the car's bumper, by removing the clips. Have no use.



9. The location of the main circuit breaker in the engine compartment is on the right side of the windshield.



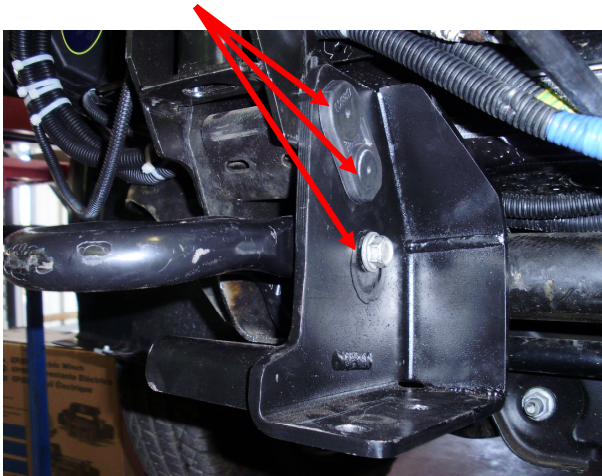
10. Cut an opening on the lower part of the original bumper, as shown in the picture and according to the template (No. CHW21.000.003).



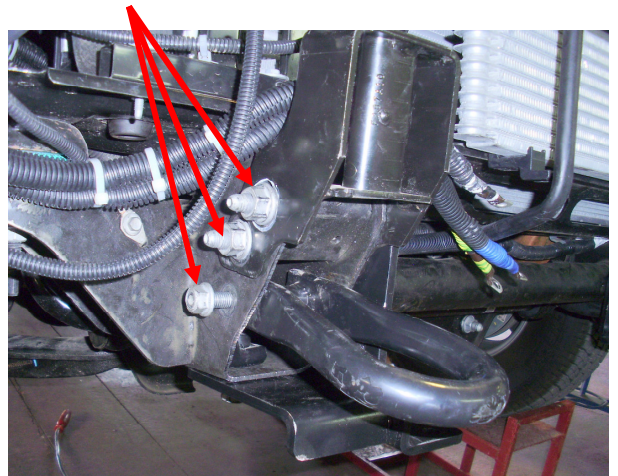
11. The bumper looks like this after cutting and adding the weatherseal as shown in the picture.



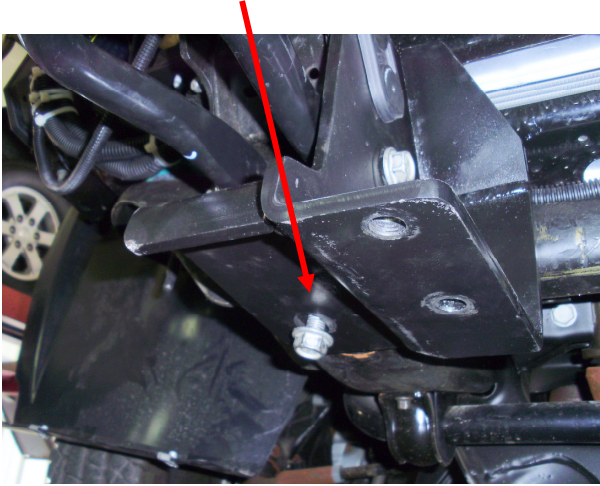
12. Install the right bracket with the three original screws (two of them together).



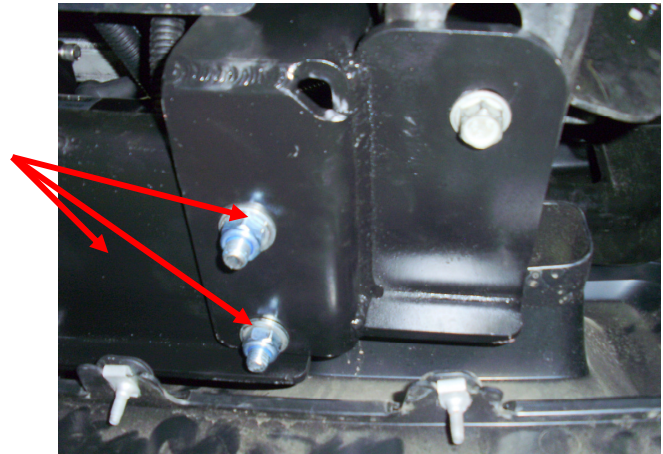
13. After installing the bracket, tighten the three screws with the original nuts.



14. Strengthen the bracket by inserting the original fourth screw and closing it with an original nut.



15. After connecting the brackets, install the winch bracket (No. CHW08.030.000) with the help of the four screws (No. 13 in the drawing).



16. A view of the vehicle after installing the winch, lips, and bumper.



17. The remote control socket position - connect plate No. 4, from the inside of the grill.

